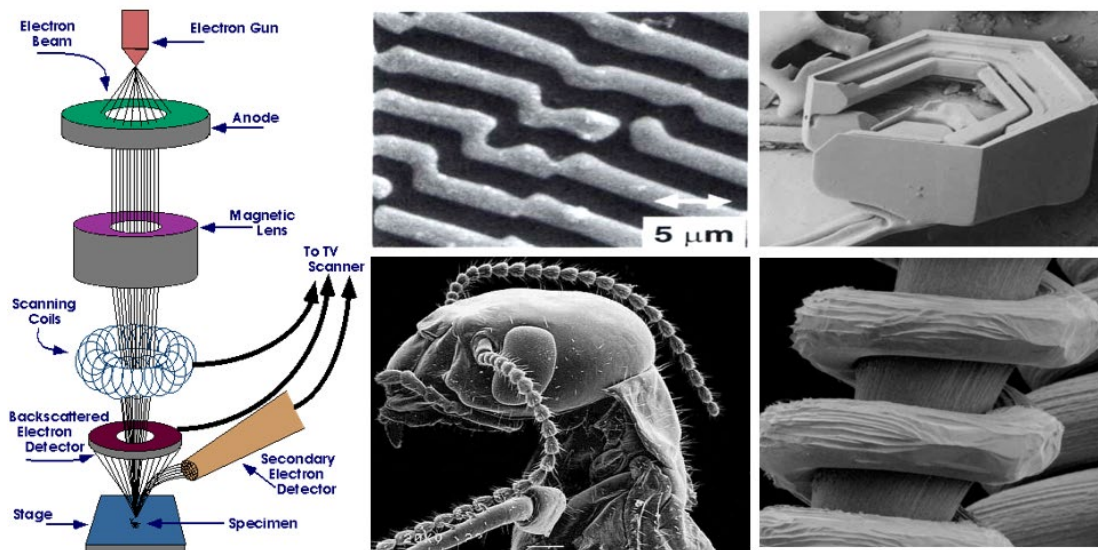


# Scanning Electron Microscopy (SEM) and Its Applications

Dr. Hongtao Shi

Department of Physics and Astronomy, SSU

In this workshop, I will talk about the principles and construction of SEM, as well as its applications in fields such as Physics, Geology, Material Science and Engineering. We will then check out the Keck Microanalysis laboratory in Salazar 2009B to see the SEM that was installed very recently.



4:00-5:00 PM

Thursday, April 14, 2022

Please register at:

<https://ee.sonoma.edu/lectures/skill-building-workshops>